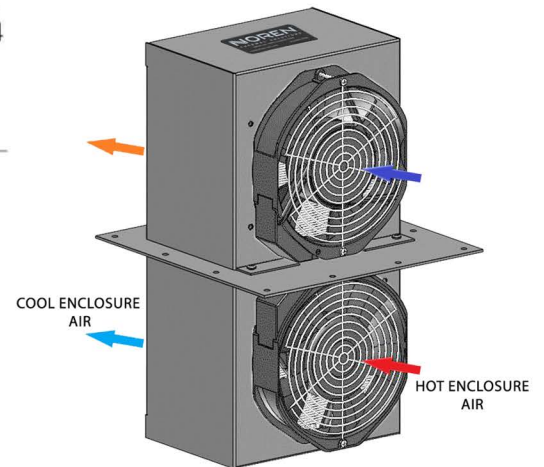
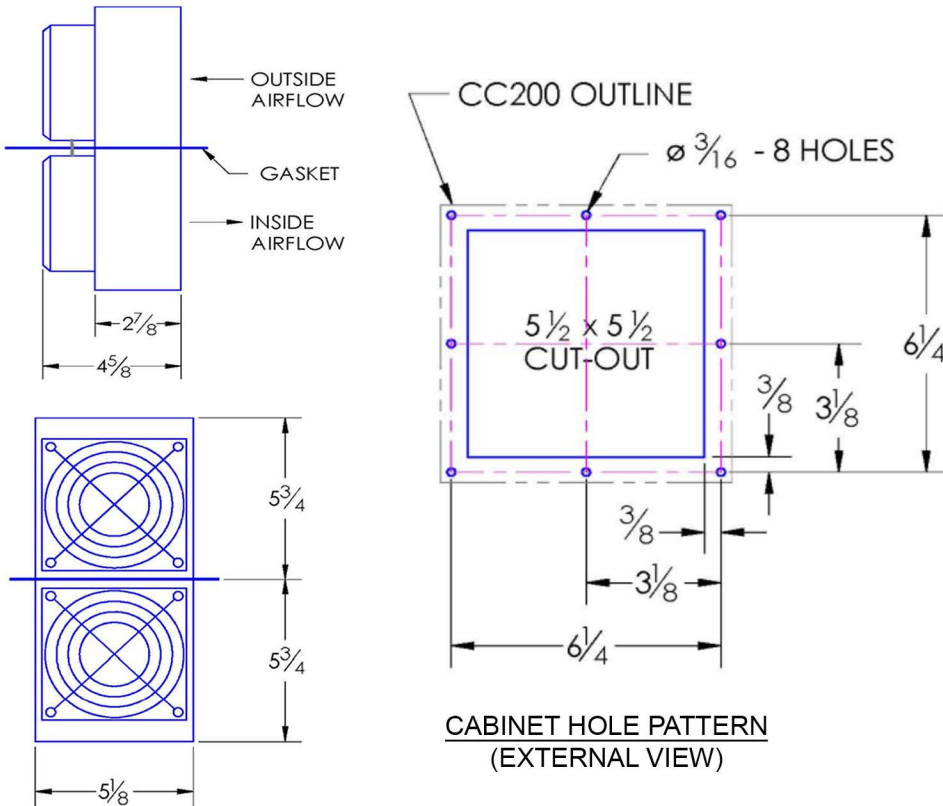


HEAT EXCHANGER CC200 TYPE 12 AIR TO AIR DROP IN MODEL

Model	Weight (lbs)	Rating @ 20°C ΔT (BTU/hr)	Amps Current Draw at 115 volts AC	Fan size	Dimensions-Inches (HxWxD)
CC200	6 lbs	1,100	0.4	2x4"	11.5 x 5.13 x 4.63

Efficiency: 16.5 Watts / °C ΔT based on average internal cabinet temperature



PRODUCT SPECIFICATIONS

1. UL Listed for TYPE 12 environments
2. CC200 Rated cooling: 330 Watts at 20°C ΔT (16.5 W/°C, mounted to an uninsulated 24" X 24" X 16" Cabinet)
3. Extends 5-3/4" into cabinet
4. Housing is aluminum (standard color). Stainless steel is available
5. Equipped with mounting gasket to maintain airtight seal
6. Internal 6-ft. Power cord with 3-prong plug is standard for AC powered units
7. Available with VAC (115 & 230) and VDC (12, 24, & 48) fans. DC powered units include junction box, consult website
8. Unit may be mounted vertically (as shown) or horizontally
9. Optional: Inlet air-filter kit available upon request
10. For design, quote, and sizing assistance: call (512) 595-5700

*Subject to change without notice



CC200 Type 12 Air to Air Drop In Model

NOREN THERMAL SOLUTIONS
205 s. Edmond Street
Taylor, TX 76574
(512) 595-5700
www.norenthermal.com

CC200 DROP-IN TYPE 12

CCS-PBD-7.2.2-883365-C