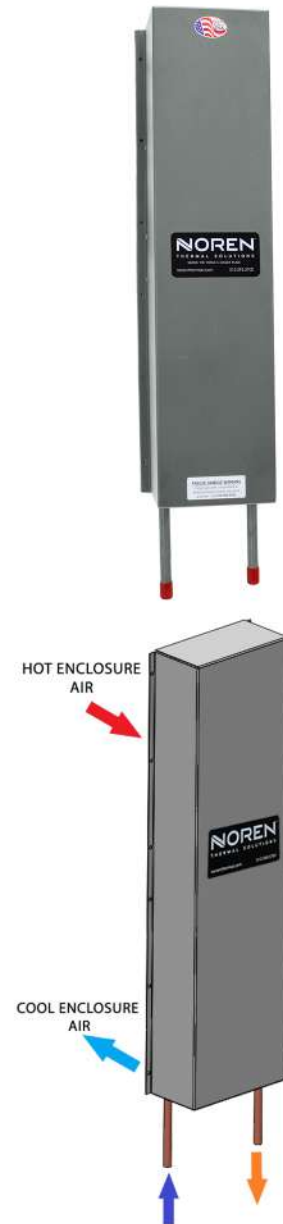
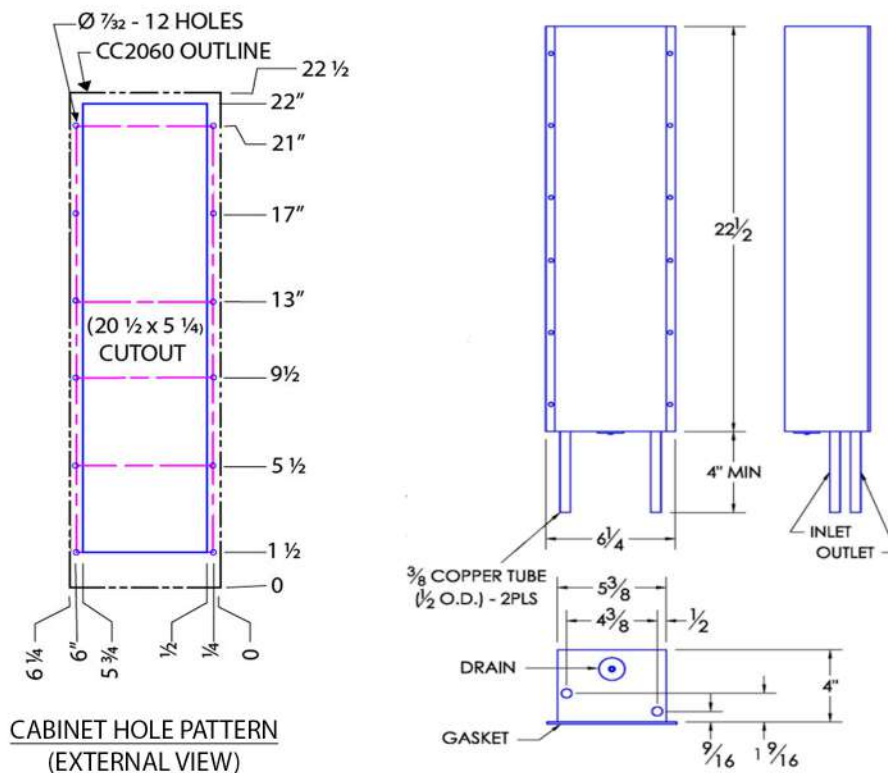


HEAT EXCHANGER CC2061 TYPE 4X FLUSH MOUNT MODEL AIR TO WATER

Model	Weight (Lbs)	Rating @ 40°C ΔT (BTU/hr)	Amps Current Draw at 115 volts AC	Fan Size	Dimensions- Inches (HxWxD)
CC2061 TYPE 4X	9 Lbs	3,350	0.2	1x4"	22.5 x 6.25 x 4

Efficiency: 24.5 Watts / °C ΔT based on average internal cabinet temperature



PRODUCT SPECIFICATIONS

1. UL Listed for TYPE 4 and TYPE 4X environments
2. CC2061 Rated cooling: 980 Watts mounted to an uninsulated 24" x 24" x 16" Cabinet with 1 GPM of water at 20°C, 40°C ambient air and 60°C cabinet air temperature
3. Designed for surface mounting on the outside of cabinet
4. Housing is Type 304 Stainless Steel (316 SS or powder coated Aluminum optional)
5. External water inlet and outlet connections
6. Equipped with mounting gasket to maintain the Type 4 integrity of your cabinet
7. Available with AC (115 & 230V) and DC (12, 24, & 48V) fans. DC version includes junction box, consult website
8. Vertical mounting only
9. Coolant water pressure: Pressure tested to 100 psi. Safe working pressure is 60 psi
10. Recommended coolant flow rate (gallons per minute): 1 GPM
11. For design, quote, and sizing assistance: call (512) 595-5700

*Subject to change without notice



CC2061 TYPE 4X Air to Water Flush Mount Model

205 s. Edmond Street
Taylor, TX 76574
(512) 595-5700
www.norenthermal.com

**CC2061 FLUSH MOUNT
TYPE 4X**

CCS-PBD-7.2.2-883342-C